

Powerful & Useful 3D Mini Saw



KendinYap

[VIEW IN BROWSER](#)

updated 13. 1. 2024 | published 13. 1. 2024

Summary

A very useful and mighty saw for hobby work.

[Hobby & Makers](#) > [Tools](#)

Tags: [saw](#) [powertools](#) [powertool](#)

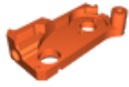
Many parts of the saw are designed for PLA filament. A few parts are designed for heat-resistant filaments (Petg, ABS, ASA). Assembly steps and details are shown in the video.

Slicer settings are included in the track names.

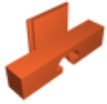
Any settings not specified are standard slicer settings. 0.2 or 0.25 layers are suitable.

The names and links of the materials required for the mini saw are in the detail section below the video.

Model files



motor-mount-wall-4-infill-60.stl



clamp-part-2-pla-or-abs.stl



ball-bearing-stopper.stl



clamp-part-5.stl



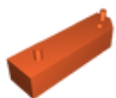
clamp-part-1.stl



ball-bearing-mount-wall-4-infill-60.stl



heat-insulation-part-petg-or-abs.stl



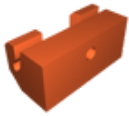
clamp-part3-pla-or-abs.stl



board-wall-5-infill-70.stl



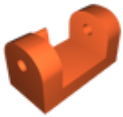
hinge-tube-part.stl



spring-retainer-infill-100.stl



dust-protection.stl



hinge-mount-part-wall-4-infill-60.stl



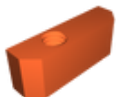
screw-part.stl



clamp-screw-ring.stl



saw-blade-safety-part.stl



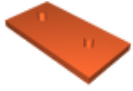
clamp-part-4.stl



timing-belt-safety-part.stl



xt60-holder.stl



support-board-pla-or-abs.stl



on-off-holder.stl



handle-part.stl



foot-part-tpu-flex.stl



clamp-screw-wall-12-nozzle-215.stl

License ©



This work is licensed under a
[Creative Commons \(4.0 International License\)](https://creativecommons.org/licenses/by-nc/4.0/)

Attribution-NonCommercial

- ✗ | Sharing without ATTRIBUTION
- ✓ | Remix Culture allowed
- ✗ | Commercial Use
- ✗ | Free Cultural Works
- ✗ | Meets Open Definition