

Power connector clamp



Médecins Sans Frontières

[VIEW IN BROWSER](#)

updated 1. 3. 2024 | published 1. 3. 2024

Summary

Clamp to prevent the power cables to accidentally disconnect



1.73 hrs



2 pcs



0.20 mm



0.40 mm



PET



24 g



Prusa MK4

[Hobby & Makers](#) > [Electronics](#)

Tags: [power](#) [powersupply](#) [powercableclip](#)

The design needs to be adjusted according to the connector type, might not work with all the cables. **Use at own risk.**

There are two versions of the clamp fitting a different shapes of connectors.

Manufacturing procedure:

- Material: PETG (PETG V0)
- 3D Printer: FDM 3D printer, average print time 1 hour (with Input Shaper on MK4)
- Slicer settings: 0.2 layer height, 6 perimeters, no supports, print in vertical position
- Post processing instructions: Clean the stringing

- Assembly instructions: Insert on the connected cables, check if the connection is tight enough.

Credits: Designs used in the visualization

<https://grabcad.com/library/iec-320-c13-cable-end-1>

<https://grabcad.com/library/power-cord-c14-iec-60230-1>

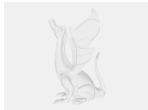
Model files



power-connector-clamp-v1.3mf



power-connector-clamp-v1.stl



power-connector-clamp-v1.f3z



power-connector-clamp-shorter-v1.3mf



power-connector-clamp-shorter-v1.stl



power-connector-clamp-shorter-v1.f3z

Print files



power-connector-clamp-v1_04n_02mm_petg_mk4is_54m.bgcode

PET 0.40 mm 0.20 mm 0.90 hrs 12 g Prusa MK4



power-connector-clamp-shorter-v1_04n_02mm_petg_mk4i... .bgcode

PET 0.40 mm 0.20 mm 0.83 hrs 12 g Prusa MK4

License

This work is licensed under a
[Creative Commons \(4.0 International License\)](#)



Attribution-ShareAlike

- ✗ | Sharing without ATTRIBUTION
- ✓ | Remix Culture allowed
- ✓ | Commercial Use
- ✓ | Free Cultural Works
- ✓ | Meets Open Definition