



## Paper towel Voronoi design



Kamteix

[VIEW IN BROWSER](#)

updated 20. 1. 2024 | published 20. 1. 2024

### Summary

Table-top paper towel holder featuring an intricate Voronoi pattern.



N/A



1 pcs



0.12 mm



0.40 mm



PLA



N/A



Prusa MK4

[Household](#) > [Kitchen](#)

Tags: [design](#) [voronoi](#) [papertowel](#) [papertowelholder](#) [sopalin](#) [essuietout](#)

Introducing a table-top paper towel holder featuring an intricate Voronoi pattern, designed for multicolor printing. This holder is both stylish and functional, adding a unique touch to your kitchen or dining area.

#### Profile details :

- No support needed
- 0.12mm layer height Recommended for superior overhang quality
- Gyroid infill

You can reduce the printing time by adjusting the layer height but you risk bad overhang above 0.16mm

## Important Tip:

- It's possible to decrease print time by increasing the layer height, be cautious. Overhang quality may deteriorate with layer heights above 0.16mm.
- For optimal fit, if you're using the standard STL or 3MF files without pre-configured settings, it's advisable to scale down the X and Y dimensions to 98%

Enjoy

## Model files



**PrusaSlicer**

2 files



**voronoi\_paper\_towel\_holder\_prusa\_monocolor.3mf**

☐ If you print with 1 color with PrusaSlicer



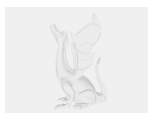
**voronoi\_paper\_towel\_holder\_prusa\_multicolor.3mf**

☐ If you print with multiple color with PrusaSlicer



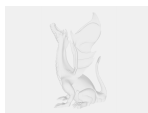
**OrcaSlicer**

2 files



**voronoi\_paper\_towel\_holder\_orca\_monocolor.3mf**

☐ If you print with 1 color with OrcaSlicer



**voronoi\_paper\_towel\_holder\_orca\_multicolor.3mf**

☐ If you print with multiple color with OrcaSlicer



**voronoi\_paper\_towel\_holder.3mf**

☐ Non configured 3MF file



voronoi\_paper\_towel\_holder.stl

## Print files



voronoi\_paper\_towel\_holder\_prusa\_monocolor\_04n\_012m... .bgcode

PLA 0.40 mm 0.12 mm 12.92 hrs 86 g Prusa MK4

## License

This work is licensed under a  
[Creative Commons \(4.0 International License\)](#)



**Attribution—Noncommercial—Share Alike**

- 
- ✗ | Sharing without ATTRIBUTION
  - ✓ | Remix Culture allowed
  - ✗ | Commercial Use
  - ✗ | Free Cultural Works
  - ✗ | Meets Open Definition