



Infinity Calendar

BG bce.gatien

[VIEW IN BROWSER](#)

updated 13. 1. 2024 | published 13. 1. 2024

Summary

An infinity calendar is a flip calendar. you flip the box to move the date or month by one.



2.85 hrs



1 pcs



0.20 mm



0.40 mm



PLA



61 g



Prusa MK4

[Household](#) > [Office](#)

This is an infinity flip calendar. Flip it back to increase the date/month.

No support is required.

The lids close with a satisfying click. The tiles (dates and months) are printed with 2 colours. I used a black and white pattern in this make. The first and last 2 layers only. The GCode file is set for changing the filament twice during the print for a Prusa MK4. The tiles are numbered for an easy assembly.

It is my first model. Let me know if I can improve on it !

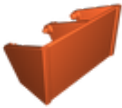
Model files



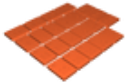
flip_calender_months_box_lid.stl



flip_calender_days_box_lid.stl



flip_calender_stand.stl



flip_calender_days_months.stl

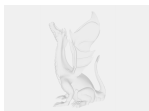
Print files



flip_calender_days_months_04n_02mm_pla_mk4is_2h51m.bgcode

🌀 PLA 🌀 0.40 mm ≡ 0.20 mm ⌚ 2.85 hrs ⚖️ 61 g 🖨️ Prusa MK4

Other files



individual-tiles-for-small-printer.zip

License

This work is licensed under a
Creative Commons (4.0 International License)



Attribution-ShareAlike

- ✗ | Sharing without ATTRIBUTION
- ✓ | Remix Culture allowed
- ✓ | Commercial Use
- ✓ | Free Cultural Works
- ✓ | Meets Open Definition