



House-Shaped Trash Can



Zicchan

[VIEW IN BROWSER](#)

updated 15. 2. 2024 | published 15. 2. 2024

Summary

Easy to print without support. It can also be used as a multipurpose box.

[Household](#) > [Other House Equipment](#)

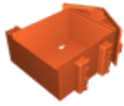
Tags: [can](#) [box](#) [office](#) [desk](#) [wallmount](#) [garbage](#) [bin](#)
[house](#) [trash](#) [multipurpose](#)

Rafts: No
Supports: No
Resolution: 0.2mm
Infill: 15%
Filament material: PLA

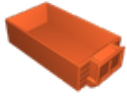
Model files



[trash-can.stl](#)



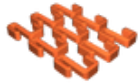
house.stl



drawer.stl



weathercock.stl



hook.stl



tray.stl

License ©

This work is licensed under a
[Creative Commons \(4.0 International License\)](#)



Attribution—Noncommercial—Share Alike

- ✗ | Sharing without ATTRIBUTION
- ✓ | Remix Culture allowed
- ✗ | Commercial Use
- ✗ | Free Cultural Works
- ✗ | Meets Open Definition