



Giant Nut & Bolt



JamesThePrinter

[VIEW IN BROWSER](#)

updated 1. 3. 2024 | published 1. 3. 2024

Summary

This M64 bolt and nut set also comes with a 46mm allen key!

[Hobby & Makers](#) > [Tools](#)

Tags: [nut](#) [large](#) [giant](#) [big](#) [screw](#) [key](#) [bolt](#) [metric](#)
[xl](#) [xxl](#) [allen](#) [allenkey](#) [xl4015](#) [iso4032](#) [iso4762](#) [m64](#)
[bitscrew](#) [bignut](#) [largenut](#)

This set is a great statement piece! Although not intended for actual use, they are sized properly to meet standards for an M64 nut and and M64x150 bolt (ISO4032 & ISO4762 respectively). I have also included the proper allen key (46mm) needed to install the bolt. The allen key has 3 main components, along with 2 pins to hold everything together:

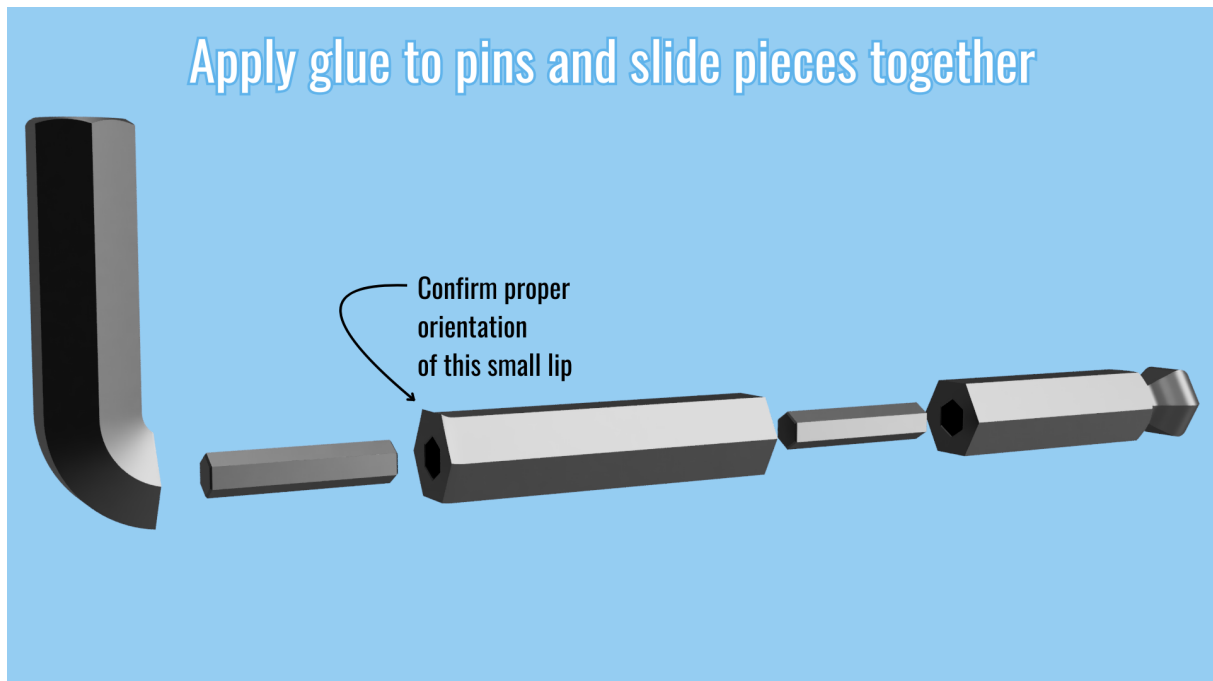
- Section 1 - Tool End
- Section 2 - Middle Piece
- Section 3 - Ball End
- Pin - Print twice

Please see the assembly instructions below.

Print Settings

All pieces print fine without supports or any special settings. For best print results, print all pieces in the orientation as they come. Although not required, I reduced infill in most areas. However, I used a higher infill percentage below all top surfaces.

Allen Key Assembly



[Buy Me A Coffee](#)

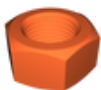
The following filament was used in the pictures above:

- Bambu Lab Matte Charcoal PLA

Model files



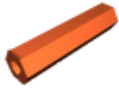
m64-bolt.stl



m64-nut.stl



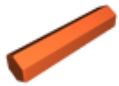
section-1-allen-key.stl



section-2-allen-key.stl



section-3-allen-key.stl



pin-allen-key.stl

 Print 2x

License

This work is licensed under a
Creative Commons (4.0 International License)



Attribution-ShareAlike

- ✗ | Sharing without ATTRIBUTION
- ✓ | Remix Culture allowed
- ✓ | Commercial Use
- ✓ | Free Cultural Works
- ✓ | Meets Open Definition