

## Garbage bag holding clip



Charly BEGOOD

[VIEW IN BROWSER](#)

updated 7. 1. 2024 | published 7. 1. 2024

## Summary

A simple trash bag clip ...

[Household](#) > [Kitchen](#)

Tags: [trashcan](#) [clips](#) [trashbagholder](#)

The stl files are configured for 23.8mm ticknes, if your shelf is a little below than 23.8mm you can use it as this.  
But i think is better to adjust the parameters with the .f3d file a little more 0.3mm at your value and use the two bolts for final tightening.  
But don't forget this is PLA bolts and not Steel ... don't tight to much ;) ....  
I use two 3.5x40 screws to assemble  
Place the bag inside the two arm et clip it.

I join the parametric f3d file if you want to use with your own values ...

## Model files

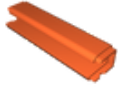


cover.stl



**base-r.stl**

---



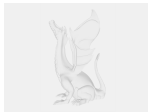
**joint.stl**

---



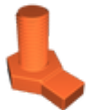
**base-l.stl**

---



**trashbag-support-new.f3d**

---



**bolt.stl**

## License

This work is licensed under a  
[Creative Commons \(4.0 International License\)](https://creativecommons.org/licenses/by/4.0/)



### **Attribution**

---

- ✗ | Sharing without ATTRIBUTION
- ✓ | Remix Culture allowed
- ✓ | Commercial Use
- ✓ | Free Cultural Works
- ✓ | Meets Open Definition