



G1 Docobot: Sliced Bread



Dr Operator

[VIEW IN BROWSER](#)

updated 1. 2. 2024 | published 1. 2. 2024

Summary

The greatest thing since...

[Toys & Games](#) > [Action Figures & Statues](#)

Tags: [toy](#) [robot](#) [figure](#) [decepticon](#) [autobot](#) [action](#)
[bread](#) [optimus](#) [transformer](#) [toast](#) [g1](#) [docobot](#)

This is a quick little update/remix of my [Ham and Cheese](#) design.

- Updated the shoulder and hip joints.
- Changed the logo from autobot/decepticon to the Docobot logo.
- Updated the overall design to require either a multi colour printer or painting skills

That last point is the biggest change. The crust is no longer separate from everything else. I recently purchased an A1 and I used Sliced Bread to get a feel for designing with the intent of printing in multi colour. I also uploaded this design over at [MakerWorld](#), so if you have an A1, it might be best to get the print profile from there to save your self some time.

Model files



sliced-bread-all.stl



pin-x6.stl



head-pin.stl



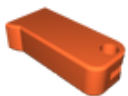
joint-x4.stl



arm-2-x2.stl



arm-1-x2.stl



leg-x2.stl



thigh-x2.stl



chest-2.stl



chest-1.stl



hand-x2.stl



head-1.stl



head-2.stl

License

This work is licensed under a
[Creative Commons \(4.0 International License\)](https://creativecommons.org/licenses/by-nc-nd/4.0/)



Attribution—Noncommercial—No Derivatives

- ✗ | Sharing without ATTRIBUTION
- ✗ | Remix Culture allowed
- ✗ | Commercial Use
- ✗ | Free Cultural Works
- ✗ | Meets Open Definition