



## Endless Collection Animal - "Independence" Animal #1



Jorge Torregrosa

[VIEW IN BROWSER](#)

updated 28. 2. 2024 | published 28. 2. 2024

### Summary

Minimalist 3D cat design, elegant lines for chic decor. Flat style perfect for modern spaces.

[Art & Design](#) > [2D Plates & Logos](#)

Tags: [decoration](#) [3d](#) [plate](#) [cat](#) [minimal](#) [design](#) [art](#)  
[geometry](#) [lineart](#) [minimalist](#) [abstract](#) [modern](#) [2d](#)  
[silhouette](#) [creative](#) [elegant](#) [minimalism](#) [independence](#)  
[flow](#) [endless](#) [lines](#) [illustration](#) [continuous](#)  
[endlesscollection](#)



**Independence** is the hallmark of the feline spirit, a characteristic as intrinsic to cats as their graceful agility and silent footsteps. Cats, with their solitary elegance, embody the very essence of self-reliance, moving through the world with an air of poised autonomy.

The relationship between humans and cats is a dance of mutual respect for personal space and individuality. Cats do not pledge their companionship lightly; they choose their human partners with discernment, bestowing their presence not out of need but out of a desire for shared experience. They remind us that independence is not a barrier to affection but rather a foundation upon which mutual respect and true companionship can flourish.

In observing the cat's independent nature, we find a mirror reflecting our own intrinsic desire for self-sufficiency. Their serene confidence in navigating the world alone inspires us to embrace our own paths with a similar blend of curiosity and certainty. The silent wisdom of cats teaches us that independence is not mere self-sustenance but the freedom to love without losing oneself.

For other designs in the collection, visit [Endless Collection](#)

## Print Settings

<b>Nozzle Size</b>	0.4mm
<b>Layer Height</b>	0.2mm
<b>Infill Density</b>	20%
<b>Infill Pattern</b>	Cubic
<b>Print Thin Walls</b>	Enabled

<b>Wall Line Count</b>	3 or more
<b>Wall Orientation</b>	Outside To Inside
<b>Supports</b>	NO
<b>Material</b>	PLA
<b>Print Orientation</b>	STL orientation

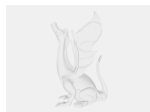
If you need to scale the model to fit your print bed, just be sure to **scale in XY and keep Z as 100%** . It needed 2mm height to fit collection stands.

## Notes

Designed to be used with the collection universal stand:

<https://www.printables.com/model/783611-endless-collection-essentials-universal-stand-1>

## Model files

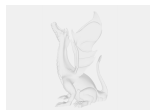


**endlesscollectionanimal-animal1.dxf**



**endlesscollectionanimal-animal1.stl**

## Other files



**endlesscollectionanimal-animal1.svg**

# License

This work is licensed under a  
**Creative Commons (4.0 International License)**



**Attribution—Noncommercial—Share Alike**

---

- ✗ | Sharing without ATTRIBUTION
- ✓ | Remix Culture allowed
- ✗ | Commercial Use
- ✗ | Free Cultural Works
- ✗ | Meets Open Definition