



Nordic Mesh ITX/ TFX case



heron

[VIEW IN BROWSER](#)

updated 7. 5. 2025 | published 7. 5. 2025

Summary

A portable 8L ITX case inspired by Fractal Design North.

[Gadgets](#) > [Computers](#)

Tags: [case](#) [fractal](#) [itx](#) [north](#) [tfx](#)

A portable 8L ITX case heavily inspired by the Fractal Design North.

Supported hardware:

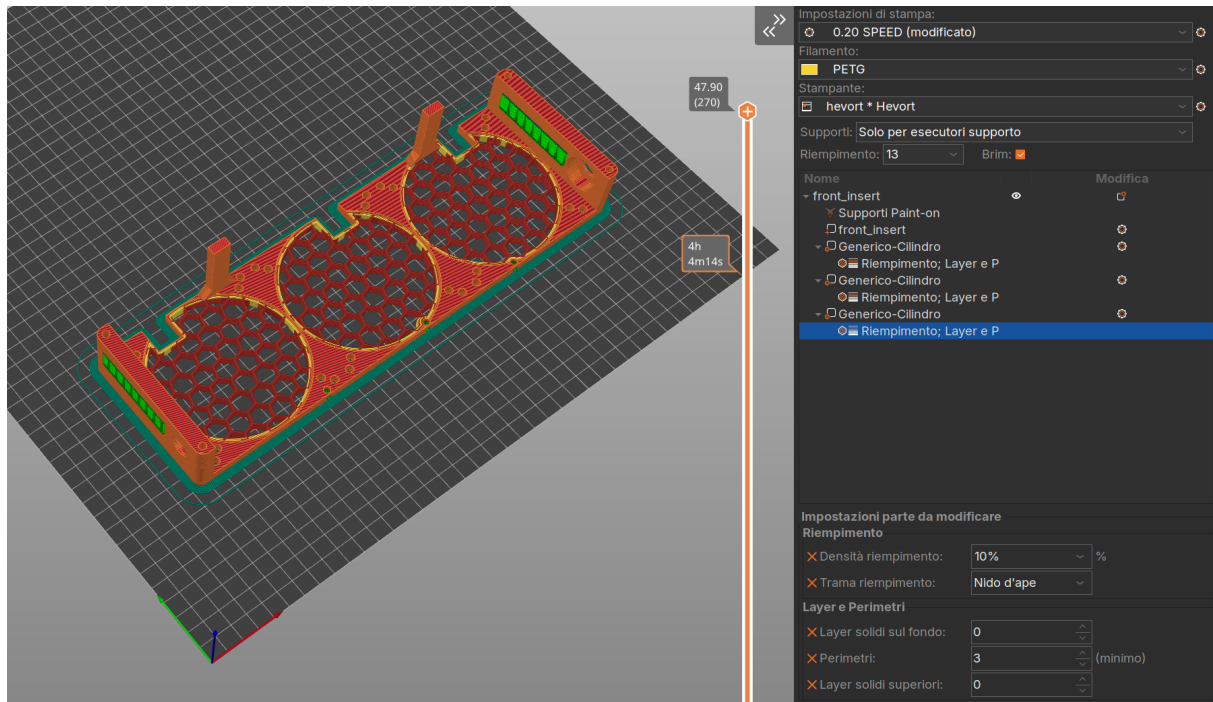
- ITX motherboard
- TFX power supply
- 2 slots low profile (half height) GPU
- 3x 92mm or 80mm case fan
- CPU cooler: Thermalright AXP120-X67 or smaller

Features

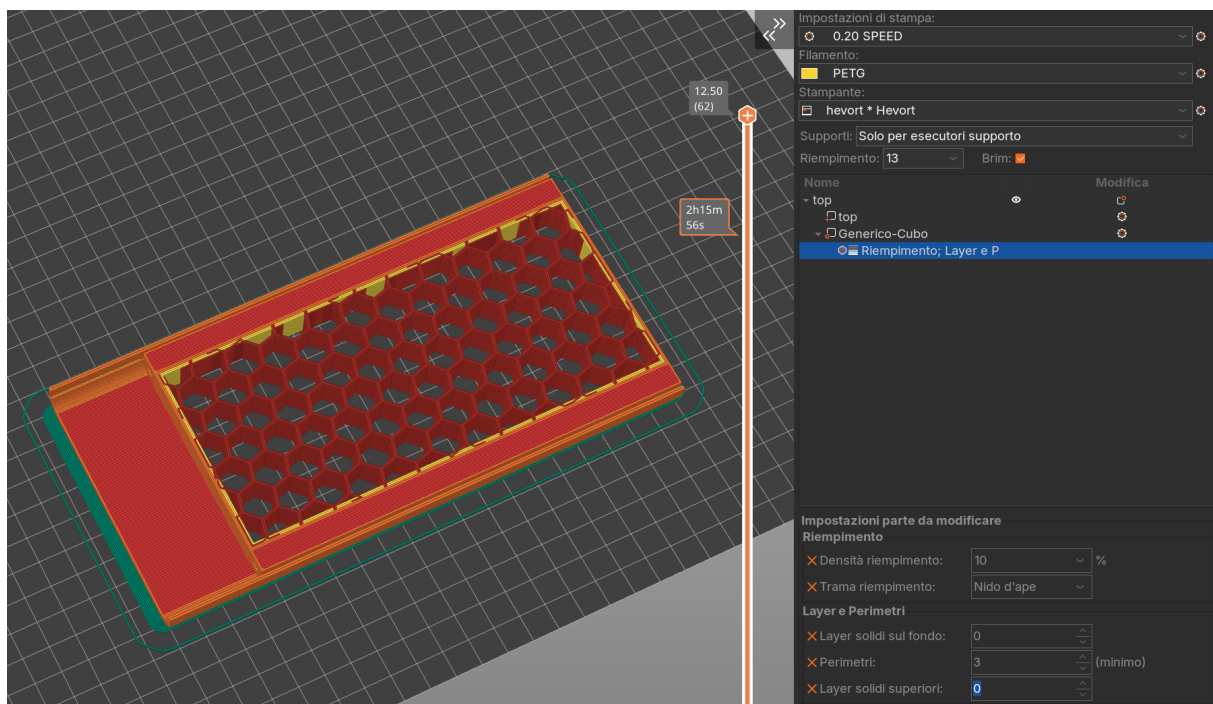
- mesh all around for better airflow/dust protection
- magnetically attached side panels for easier access to the internals
- magnetically attached front filter for easier cleaning

Printing

- 1x back.3mf: black
- 1x tray.3mf (with no top/bottom surfaces): black
- 1x front.3mf (print with no top/bottom surfaces where the fans are): black



- 1x band.3mf: white
- 2x top.3mf (with no top/bottom surfaces): white



- 2x side.3mf: white

- 1x flare.3mf: black
- 4x foot.3mf: white

BOM

- 12x M3x30mm bottom head screws (for mounting fans)
- 8x M3x50mm screws
- 6x M3x20mm screws
- 36x M3 threaded inserts
- 6x M3 (square) nuts
- 16x 8x3mm magnets
- 8x 8x2mm magnets
- a roll of black mesh pvc dust filter
- a roll of white mesh pvc dust filter
- 8x square 5x278mm wood sticks ... or you can just print 8x copies of wood.3mf
- a 12mm momentary switch



- front panel USB 3.0 ports



- superglue, PVA glue, double sided tape

ASSEMBLY

- Superglue 4 8x3mm magnets inside back.3mf
- Superglue 4 8x3mm magnets inside front.3mf
- Press 4 M3 inserts into the standoffs of tray.3mf
- Drop the 6 square nuts inside tray.3mf
- Press 24 heat inserts into front.3mf
- Attach tray.3mf to front.3mf and back.3mf using the 6 M3x20mm screws
- Superglue 4 8x3mm magnets inside band.3mf
- Slide front.3mf inside band.3mf
- Press 4 M3 inserts into the 2 top.3mf
- Cut 2 20x12.5cm rectangles of white PVC
- Using double sided tape, wrap and stick the PVC mesh around the 2 top.3mf. Make sure to keep the mesh tight.
- Using 8 M3x50mm screws, screw front.3mf to band.3mf and back.3mf
- Superglue 4 8x2mm magnets inside side.3mf
- Cut 2 20x28cm rectangles of white PVC
- Using double sided tape, stick the PVC mesh to the 2 side.3mf
- Superglue 4 8x3mm magnets inside flare.3mf
- Trace the outline of flare.3mf on the black PVC mesh, cut it and stick to the back of flare.3mf with double sided tape
- Cut the wood sticks to size (278mm) and stick to flare.3mf with wood glue
- Stick some grippy rubber pads to the feet and stick the feet to the bottom of the case with double sided tape
- Downsize the USB 3.0 connector by sawing off (or filing off) all the “useless” rubber right past the screws on each side.
- Install the USB 3.0 connector and the power switch

BUILD YOUR PC

- Attach the fans to front.3mf using 12 M3x30mm screws. Before screwing them, pass the fan cables through the 3 square holes.
- Close the fans by magnetically attaching flare.3mf to the inside of band.3mf
- Install the PSU, motherboard, and CPU cooler.
- Close the case by magnetically attach the 2 side panels (side.3mf)

Model files



back.3mf



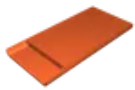
tray.3mf



front.3mf



band.3mf



top.3mf



side.3mf



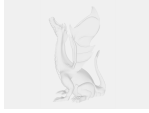
flare.3mf



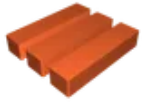
foot.3mf



wood.3mf



nordic.step



pcie_cover.3mf

License ©

This work is licensed under a
[Creative Commons \(4.0 International License\)](#)



Attribution

-
- ✗ | Sharing without ATTRIBUTION
 - ✓ | Remix Culture allowed
 - ✓ | Commercial Use
 - ✓ | Free Cultural Works
 - ✓ | Meets Open Definition